



Certificate of Analysis

Compound SLU-PP-332

Label Claim 5 mg

Batch/Lot SLU331-5-022601

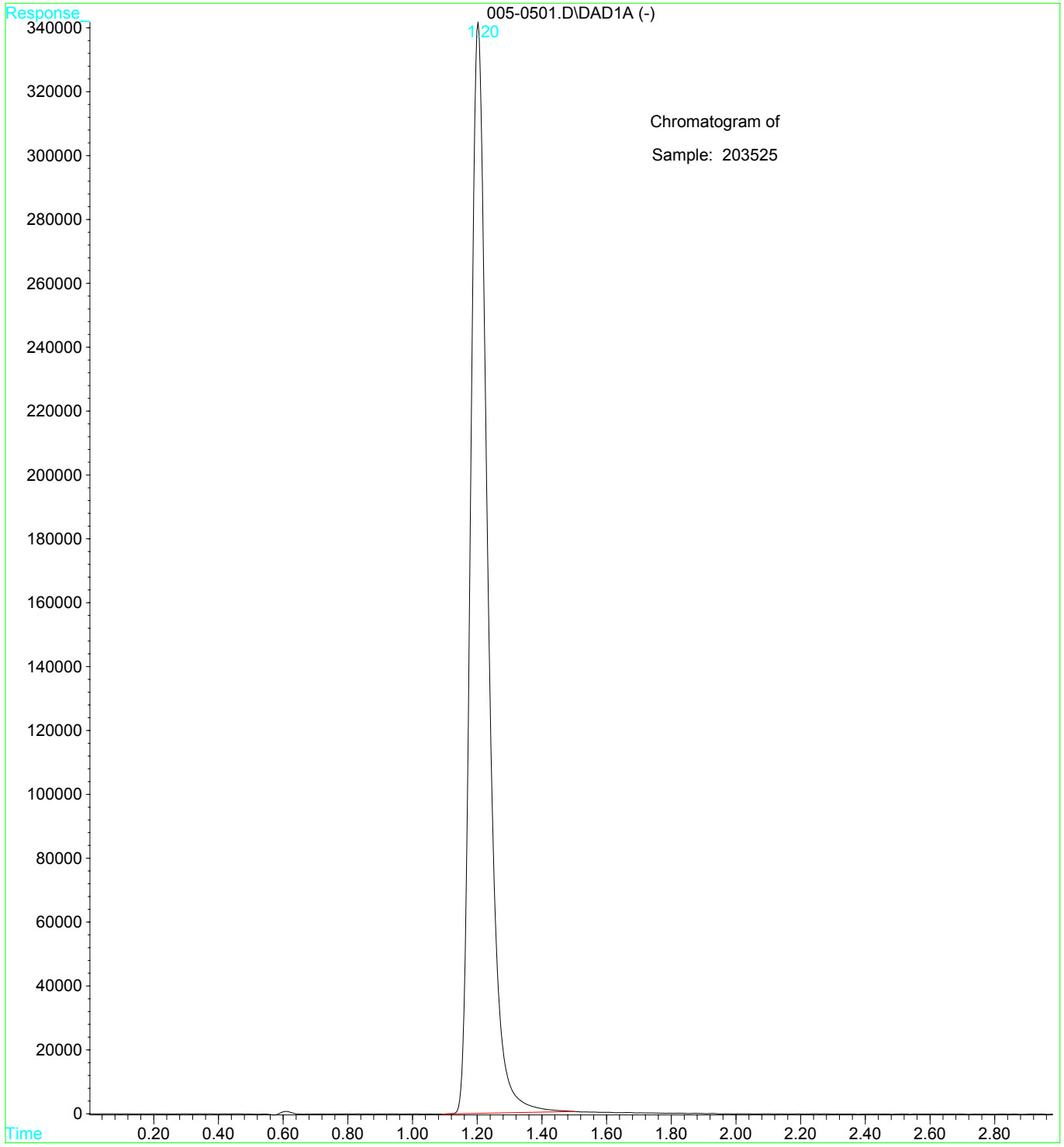
<u>Analyte</u>	<u>Result</u>	<u>Units</u>	<u>LOQ</u>	<u>% of Label</u>	<u>Method</u>	<u>Date</u>	<u>CAS</u>
Peptide Analysis							
Chromatographic purity	>99.9	%			HPLC-UV/MS	4/29/2026	
SLU-PP-332	5.5	mg	0.1	110	HPLC-UV-MS	4/29/2026	303760-60-3 □
Mass Spectral Match	ID Confirmed				HPLC-UV-MS	4/29/2026	

The data presented are from the analysis of the sample shown and meet Krause Analytical internal quality assurance criteria unless otherwise flagged.
Methods shown reference current Krause Analytical SOPs
ND - Not detected LOQ - limit of quantification
All values reported on a per vial basis unless otherwise noted
Copyright © 2026 Krause Analytical LLC. All rights reserved.

Respectfully submitted,

Mark C. Krause
Laboratory Director

CHROMATOGRAM



Sample Report:

1: (Time: 0.78) Combine (39:45- (19:22+57:60))

1:MS ES+
3.5e+005

