

## Certificate of Analysis

**Compound** KPV  
**Label Claim** 5 mg  
**Batch/Lot** KPV-5-022601

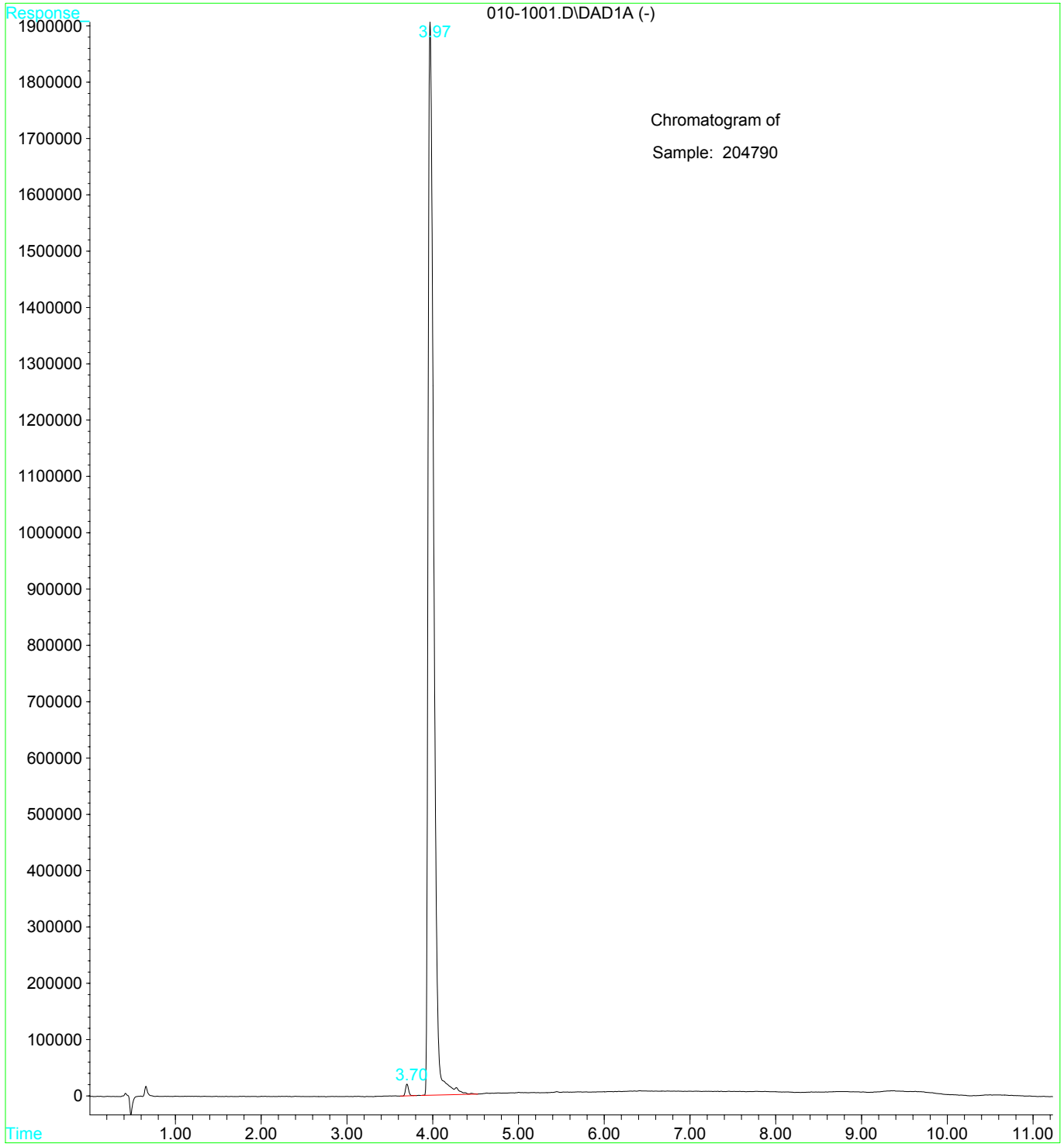
<u>Analyte</u>	<u>Result</u>	<u>Units</u>	<u>LOQ</u>	<u>% of Label</u>	<u>Method</u>	<u>Date</u>	<u>CAS</u>
<b>Peptide Analysis</b>							
Chromatographic purity	99.4	%	0.5		HPLC-UV/MS	4/23/2026	
KPV	5.20	mg	0.5	104.0	HPLC-UV-MS	4/23/2026	112965-21-6
Mass Spectral Match	ID Confirmed				HPLC-UV-MS	4/23/2026	

The data presented are from the analysis of the sample shown and meet Krause Analytical internal quality assurance criteria unless otherwise flagged.  
Methods shown reference current Krause Analytical SOPs  
ND - Not detected LOQ - limit of quantification  
All values reported on a per vial basis unless otherwise noted  
Copyright © 2026 Krause Analytical LLC. All rights reserved.

Respectfully submitted,

Mark C. Krause  
Laboratory Director

\*\*\*\*\*  
CHROMATOGRAM  
\*\*\*\*\*



Sample Report:

1: (Time: 0.31) Combine (14:20- (7:10+32:35))

1:MS ES+  
2.7e+006

